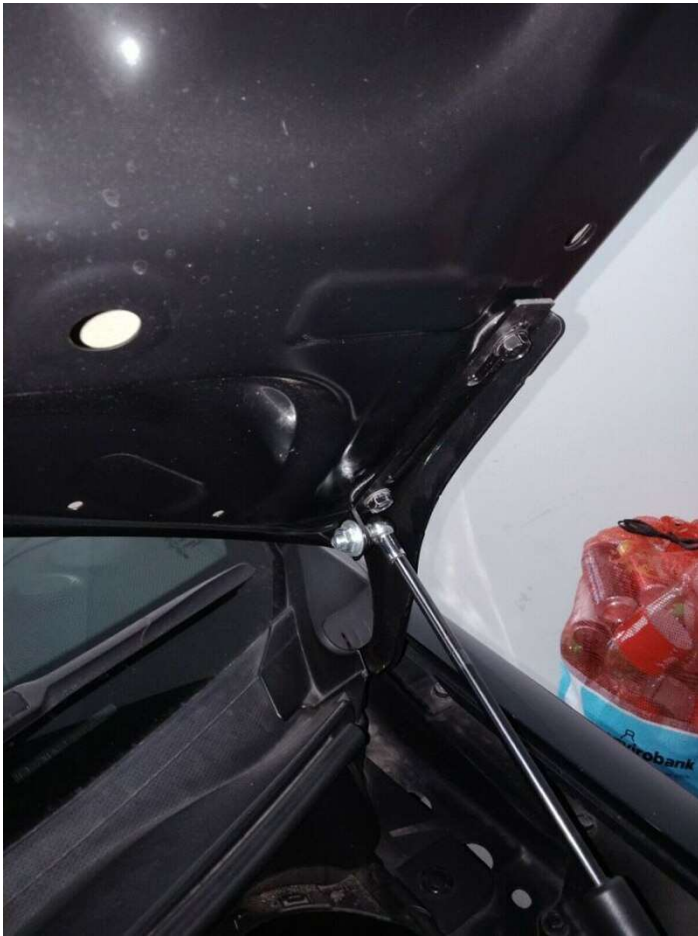


Gas Hood Struts Installation Guide

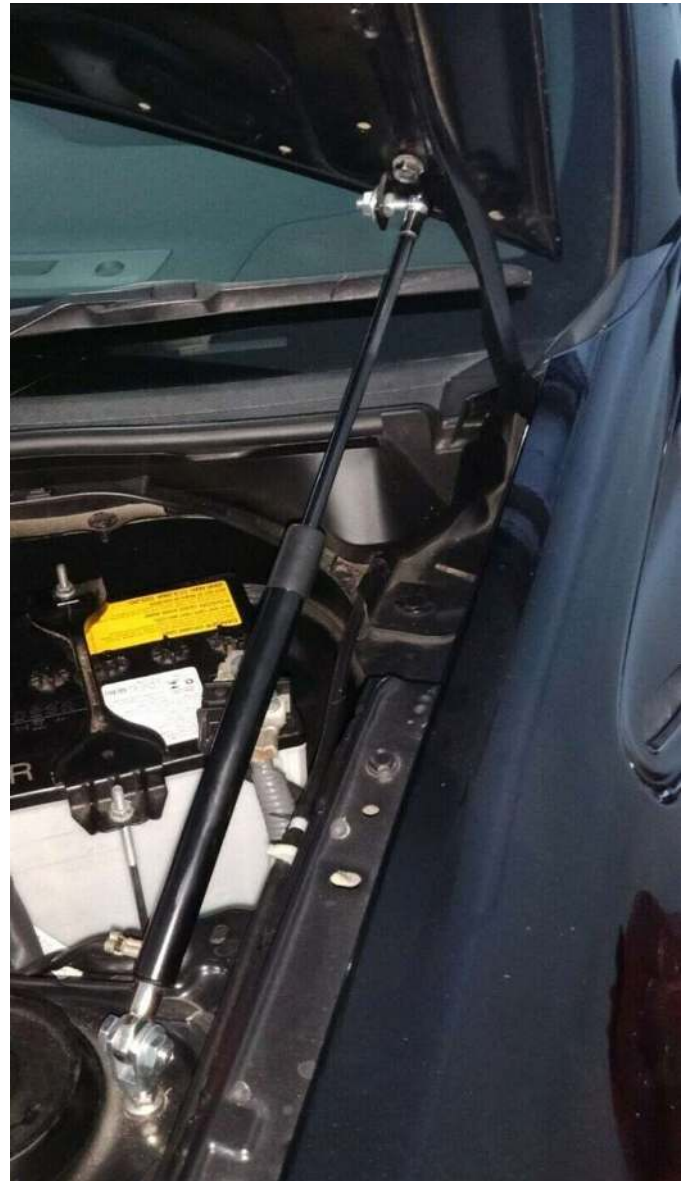
Toyota 86 GT/GTS & Subaru BRZ



Step 1:

Open the hood and prop open with the hood stick as you normally would. Begin with installing on one side first and then do the other.

Install the bracket by first removing the 2 bolts that attach to the hood. Install the bracket and install both bolts back in place. The bracket should be facing down with the 90 degree bend facing inwards to the engine bay.



Step 2:

Now attach the base of the gas strut to the bolt from the front suspension. Use the closest bolt so that the struts are facing directly forward.

Next hold the hood open a little higher and line up the top of the gas strut and bolt into the 90 degree bend of the top bracket.



Step 3:

Gently test that the hood is opening and closing correctly. It should not take much effort to close and open. If you cannot close the hood please check that the bracket was installed the correct way as shown in the images.

We thank you for being a valued customer @LED86.com.au!

Keep up to date with new products and photos by becoming a fan on our facebook page at www.facebook.com/led86au